

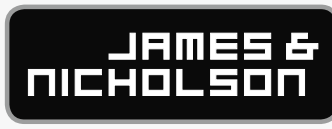
myrtle
beach

JAMES &
NICHOLSON

**BUSINESS
CATALOGUE**

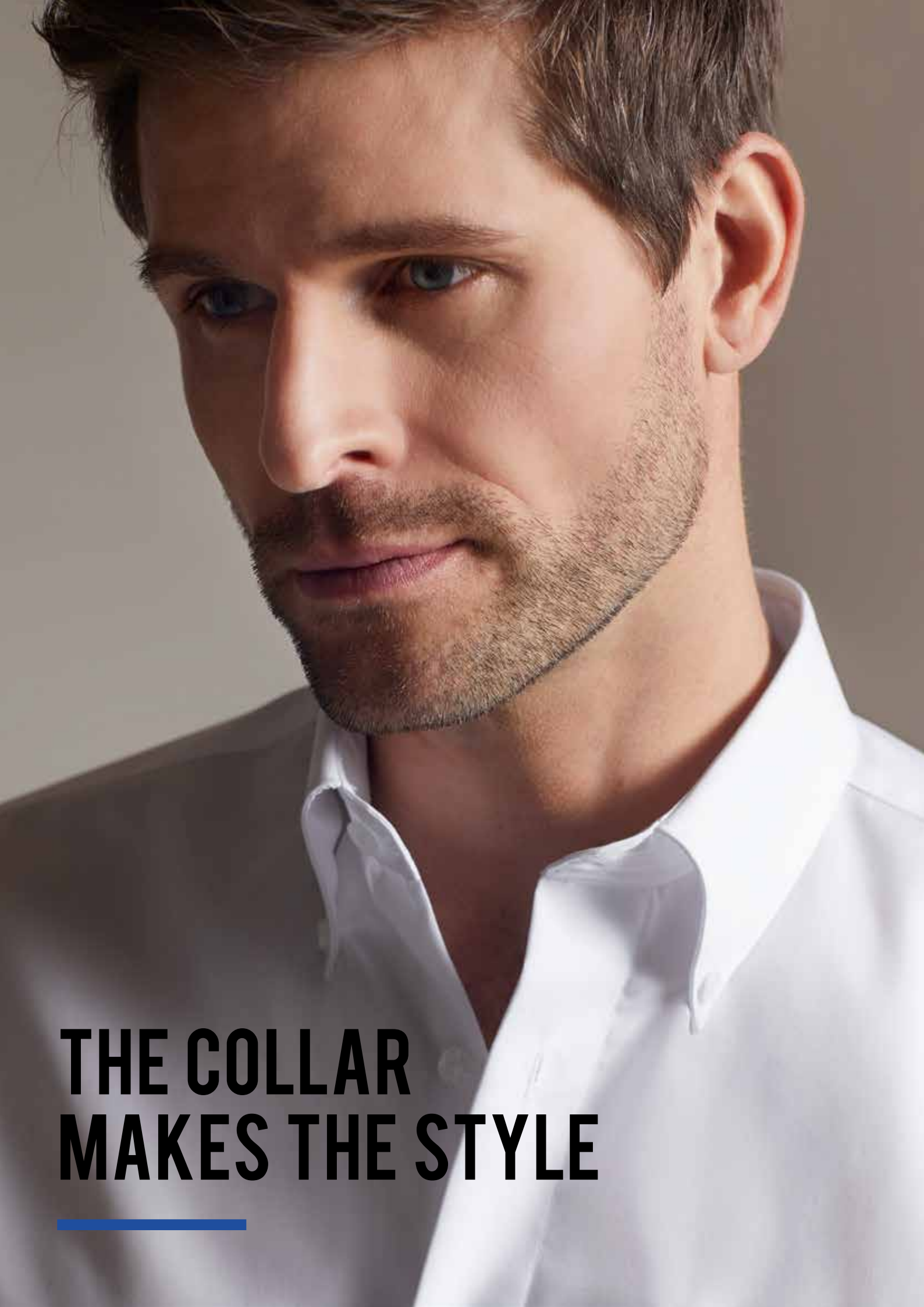


DISCOVER THE GREAT WORLD OF BUSINESS STYLES!



SHIRTS	4-45	COATS	52-53
PULLOVERS	46-51	JACKETS	54-63



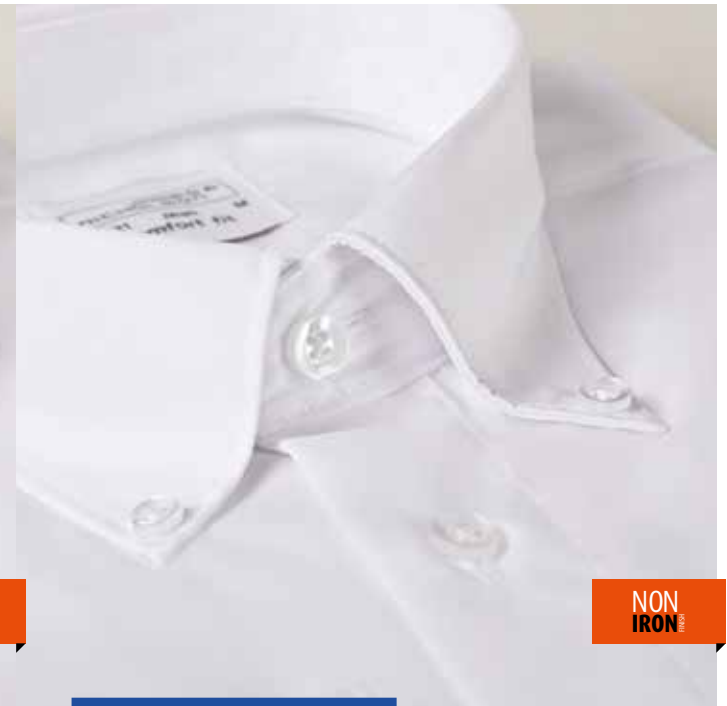


THE COLLAR MAKES THE STYLE



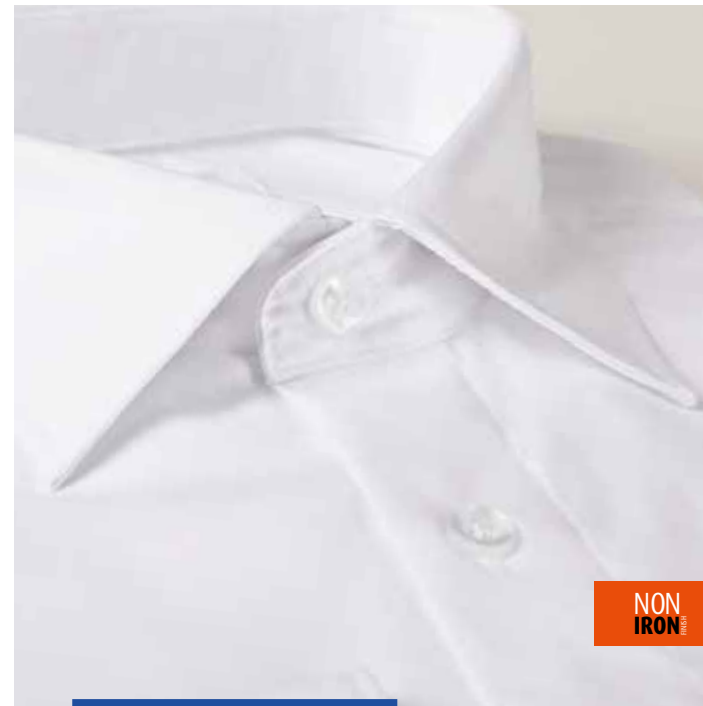
CUTAWAY-COLLAR FASHIONABLE

The cutaway collar is very popular for men who like fashion. Thanks to the spread collar shanks it can also be worn with ties made of medium-weight fabric and thicker tie knots, which lends the outfit a casual yet elegant appearance.



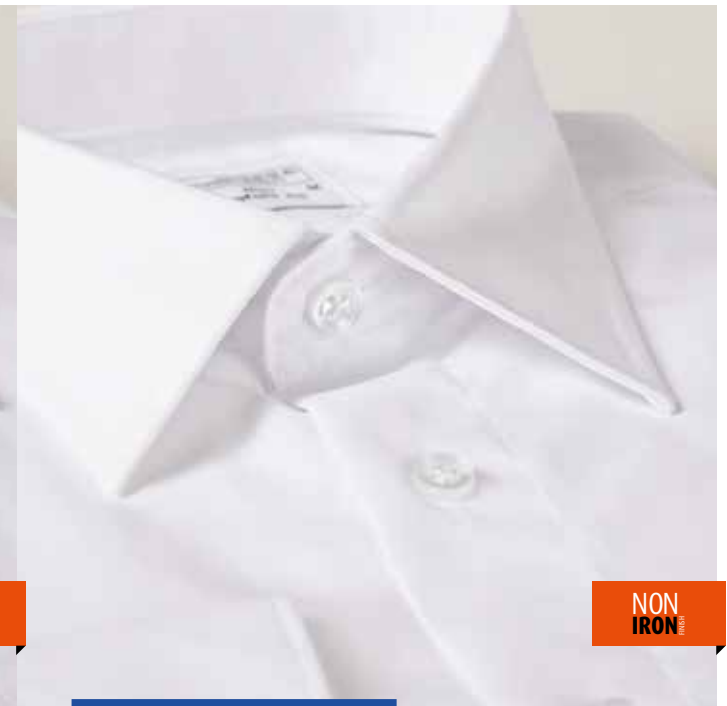
BUTTON-DOWN-COLLAR SPORTIVE

The button-down-collar with its shanks is an allrounder and cuts a very fine figure with fairly sturdy and casual fabrics and without a tie. It makes the wearer seem slimmer, but accentuates his chin. Men wear the button-down shanks. The button-down shirts are available in the slim-fit version 'Modern Fit' and in the classic version 'Comfort Fit'.



NEW KENT-COLLAR VERSATILE

It is fashionable as well as classic. With its collar shanks spread a bit wider, the New Kent-collar is a mixture of Kent- and cutaway-collar. The shirt can be worn with a suit, under a pullover or just on its own. Reinforced with collar stiffeners, this collar fits perfectly.



KENT-COLLAR THE CLASSIC

The epitome of today's shirt collar, the Kent-collar is the classic in the suit sector. It offers space for almost all tie knots and is not only very versatile regarding the shape of the collar shanks: The Kent collar also cuts a fine figure under a leather jacket.

CUTAWAY COLLAR- A STATEMENT FOR MODERN STYLE!



JN 620 MEN'S SHIRT „HAI“

Business shirt ‚Comfort Fit‘ with cut away collar | High-quality poplin with non-iron finish | Breast pocket, 2 lateral back pleats | 2 buttons for adjusting the width of the cuff | Rounded hem | Outer fabric: 100% cotton

S • M • L • XL • XXL • 3XL





The button-down shirt can be worn with or without tie.



JN 621 MEN'S SHIRT „BUTTON DOWN“

Business shirt ‚Comfort Fit‘ with button-down collar | High-quality poplin with non-iron finish | Breast pocket, 2 lateral back pleats | 2 buttons for adjusting the width of the cuff | Rounded hem | Outer fabric: 100% cotton

S · M · L · XL · XXL · 3XL

JN 625 MEN'S SHIRT „BUTTON DOWN“

Business shirt ‚Modern Fit‘ with button-down collar | High-quality poplin with non-iron finish | Breast pocket, 2 lateral back pleats | 2 buttons for adjusting the width of the cuff | Rounded hem | Outer fabric: 100% cotton

S · M · L · XL · XXL

NON
IRON

KENT COLLAR – THE CLASSIC LOOK FOR BUSINESS

Shirts with cuff links stand for style, elegance and individuality and with the matching cuff-links they symbolise self-confidence and fashion courage. Shirts with cuff links are mostly worn on festive occasions – but in the office they also have that special something, after all business shirts with turn-back cuffs show individuality and a sense of style.

JN 624 MEN'S SHIRT „KENT“, FOR CUFFLINKS

Business shirt ‚Comfort Fit‘ with new spread collar and French cuff | High-quality poplin with non-iron finish | Breast pocket, 2 lateral back pleats | French cuff for cufflinks | Rounded hem | Outer fabric: 100% cotton

S • M • L • XL • XXL • 3XL



With a suit, pullover or just on its own:
the New Kent is always both a classic
and a modern eye-catcher.



NON
IRON

JN 622 MEN'S SHIRT „NEW KENT“

Business shirt ‚Comfort Fit‘ with new spread collar | High-quality poplin with non-iron finish |
Breast pocket, 2 lateral back pleats | 2 buttons for adjusting the width of the cuff | Rounded hem |
Outer fabric: 100% cotton

S • M • L • XL • XXL • 3XL



NON
IRON

JN 623 MEN'S SHIRT „KENT“

Business shirt ‚Comfort Fit‘ with new spread collar | High-quality poplin with non-iron finish |
Breast pocket, 2 lateral back pleats | 2 buttons for adjusting the width of the cuff | Rounded hem |
Outer fabric: 100% cotton

S • M • L • XL • XXL • 3XL

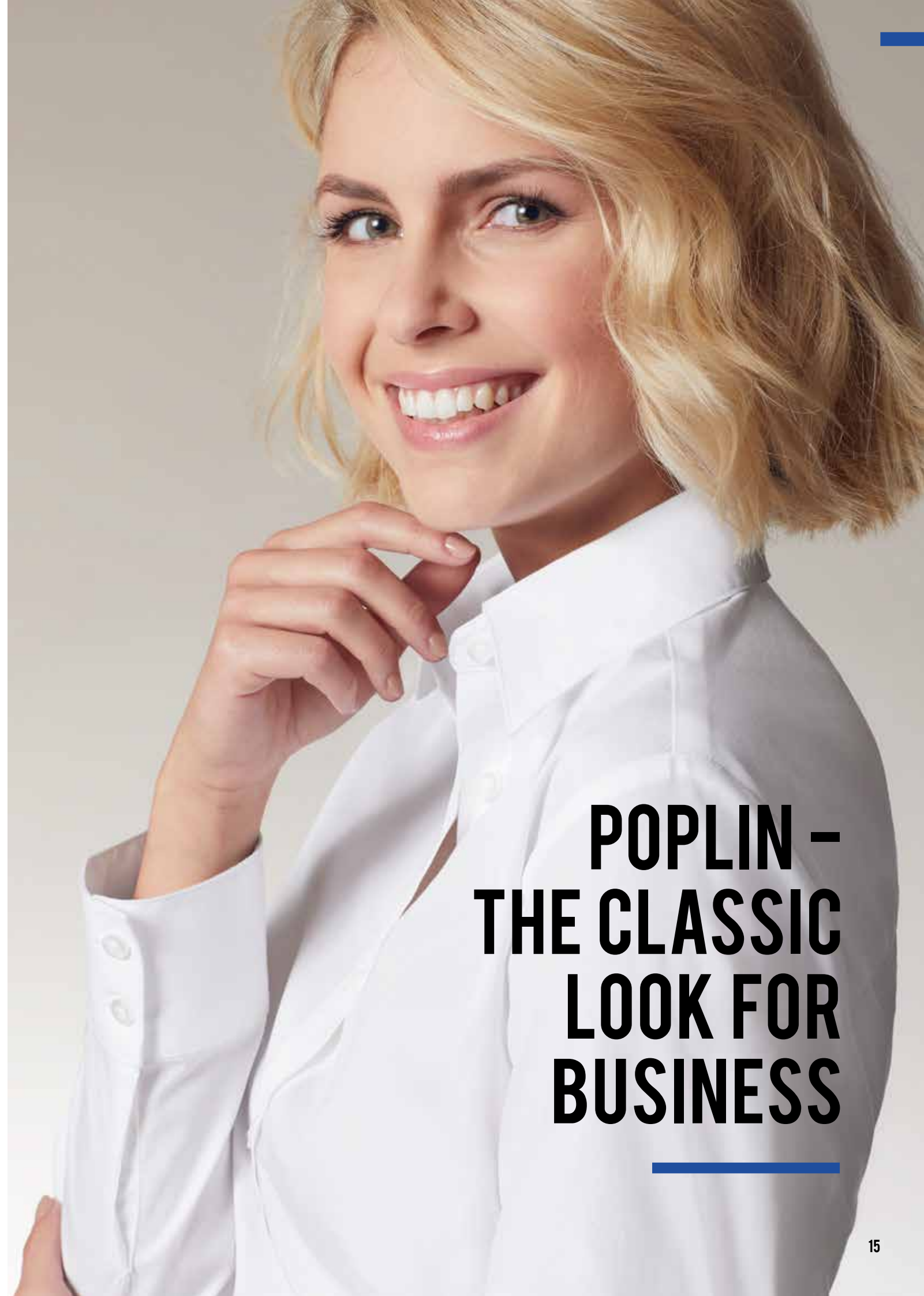


easy
care

JN 626 LADIES' BLOUSE

Business blouse ‚Elastic Fit‘ with shirt collar | Fine elastic poplin with easy-care finish | Lightly waisted, darts at the front and at the back | Cuff with 2 buttons | Rounded hem | Outer fabric: 95% cotton, 5% elasthane

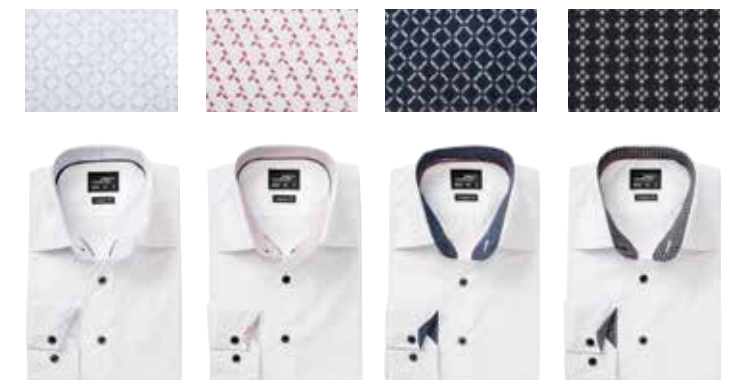
XS · S · M · L · XL · XXL



**POPLIN –
THE CLASSIC
LOOK FOR
BUSINESS**



white/
blue-white



white/
white-light-blue

white/
white-red

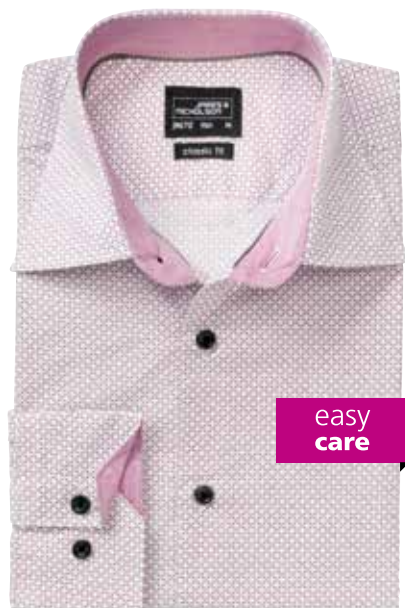
white/
navy/white

white/
titanium-white

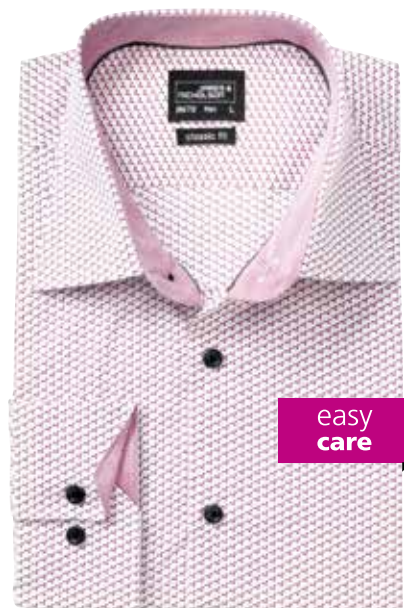
JN 648 MEN'S SHIRT „PLAIN“
JN 647 LADIES' SHIRT „PLAIN“

Shirt with trendy insets on collar and cuffs | High quality poplin with easy-care finish, easy to iron | Buttons in contrasting colour | Rounded hem | JN 647: Waisted, feminine cut | JN 648: Classic fit, lightly waisted, pleat on rear yoke | Outer fabric (100 g/m²): 100% cotton

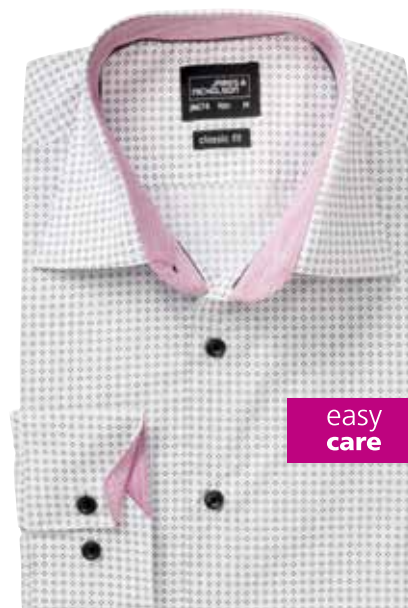
JN 648 S · M · L · XL · XXL · 3XL | JN 647 XS · S · M · L · XL · XXL



easy care



easy care



easy care

JN 670
MEN'S SHIRT „DIAMONDS“

JN 669
LADIES' SHIRT „DIAMONDS“

Classic shirt with fashionable minimum allover print | High quality poplin with easy-care finish, easy to iron | Rounded hem | JN669: Waisted, feminine cut | JN 670: Classic fit, lightly waisted, pleat on rear yoke | Outer fabric (100 g/m²): 100% cotton

JN 670 S · M · L · XL · XXL · 3XL
JN 669 XS · S · M · L · XL · XXL

JN 672
MEN'S SHIRT „WINGS“

JN 671
LADIES' SHIRT „WINGS“

Classic shirt with fashionable minimum allover print | High quality poplin with easy-care finish, easy to iron | Rounded hem | JN 671: Waisted, feminine cut | JN 672: Classic fit, lightly waisted, pleat on rear yoke | Outer fabric (100 g/m²): 100% cotton

JN 672 S · M · L · XL · XXL · 3XL
JN 671 XS · S · M · L · XL · XXL

JN 674
MEN'S SHIRT „DOTS“

JN 673
LADIES' SHIRT „DOTS“

Classic shirt with fashionable minimum allover print | High quality poplin with easy-care finish, easy to iron | Rounded hem | JN 673: Waisted, feminine cut | JN 674: Classic fit, lightly waisted, pleat on rear yoke | Outer fabric (100 g/m²): 100% cotton

JN 674 S · M · L · XL · XXL · 3XL
JN 673 XS · S · M · L · XL · XXL



white/light-blue white/red navy/white



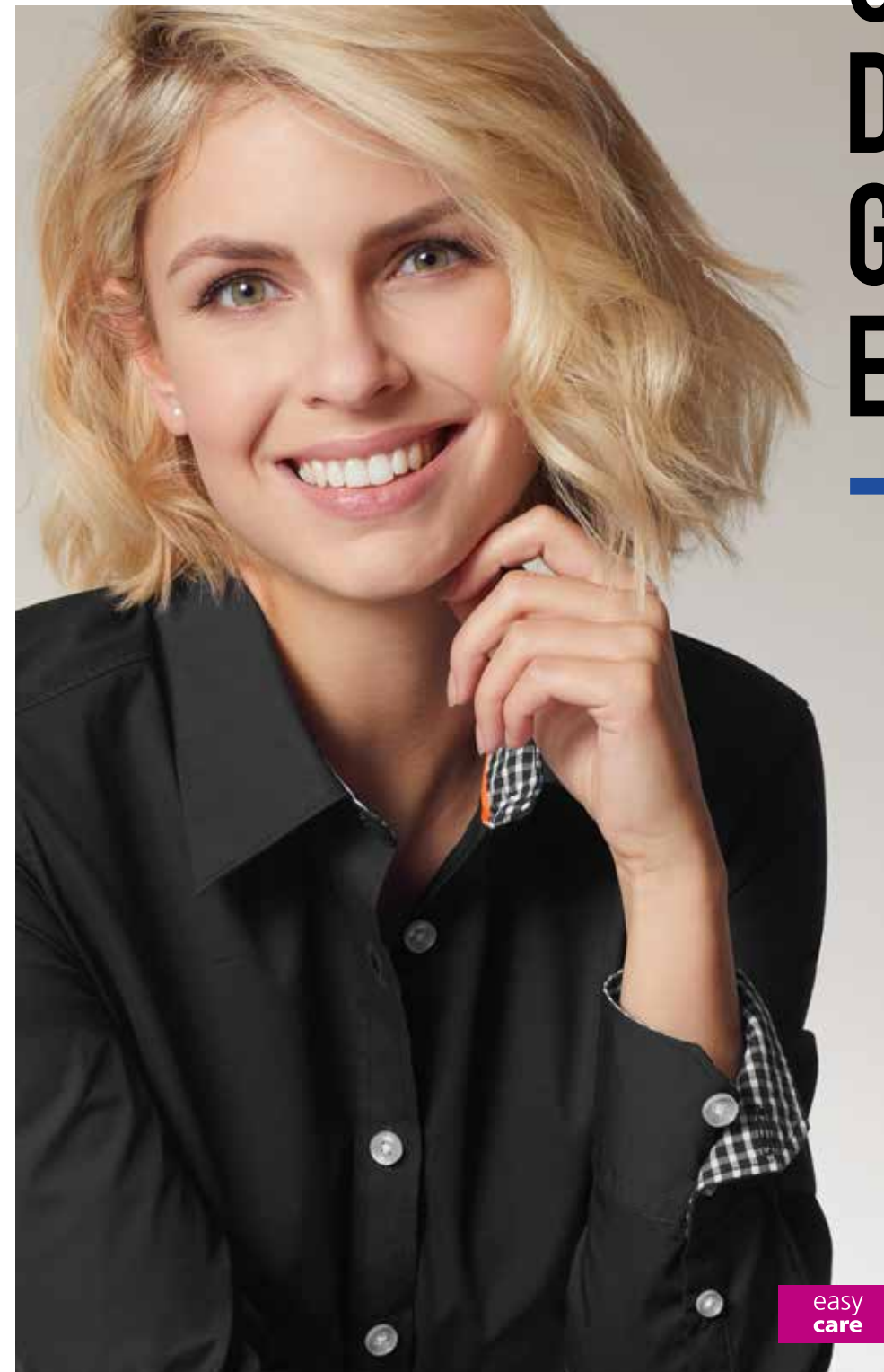
white/red blue/white titan/white



white/light-blue white/titan navy/white



SMALL DETAILS – GREAT EFFECT



black/
black-white

light-blue/
navy-white

white/
black-white

white/
royal-white

white/
red-white



easy
care

JN 619 MEN'S PLAIN SHIRT JN 618 LADIES' PLAIN SHIRT

Fashionable checked shirt with uni-coloured insets on collar and cuff | High-quality poplin fabric, easy to iron thanks to easy-care finish | Rounded hem | JN619: classic fit, slightly waisted, breast pocket, 2 lateral pleats at the back | JN618: waisted, feminine cut | Outer fabric (100 g/m²): 100% cotton

JN 619 S · M · L · XL · XXL · 3XL | JN 618 XS · S · M · L · XL · XXL

MORE COURAGE FOR COLOUR



green/
white

forest-green/
white

purple/
white*



dark-orange/
white

red/
white

bordeaux/
white



glacier-blue/
white

turquoise/
white

royal/
white



navy/
white

black/
white

white/
blue-yellow-white



royal/
blue-green-white

dark-orange/
blue-orange-white

navy/
red-navy-white



JN 617 MEN'S CHECKED SHIRT

JN 616 LADIES' CHECKED BLOUSE

Fashionable checked shirt with uni-coloured insets on collar and cuff | High-quality poplin fabric, easy to iron thanks to easy-care finish | Rounded hem | JN617: classic fit, slightly waisted, breast pocket, 2 lateral pleats at the back | JN616: waisted, feminine cut | Outer fabric (100 g/m²): 100% cotton

JN 617 S • M • L • XL • XXL • 3XL | JN 616 XS • S • M • L • XL • XXL

* only JN 616 available



JN 680 MEN'S SHIRT SHORTSLEEVE POPLIN **JN 679** LADIES' SHIRT SHORTSLEEVE POPLIN

Classic shirt made of easy care mixed fabrics | Poplin with easy care finish | Rounded hem | JN679: Waisted feminine cut | JN680: Classic fit, lightly waisted, breast pocket | Pleats on rear yoke | Outer fabric (105 g/m²): 65% polyester, 35% cotton

JN 680 S · M · L · XL · XXL · 3XL · 4XL | JN 679 XS · S · M · L · XL · XXL · 3XL



white stone steel light-grey yellow orange light-pink tomato red wine



lime-green irish-green light-blue aqua turquoise royal navy brown carbon black

JN 678 MEN'S SHIRT LONGSLEEVE POPLIN **JN 677** LADIES' SHIRT LONGSLEEVE POPLIN

Classic shirt made of easy care mixed fabrics | Poplin with easy care finish | Rounded hem, buttons | JN677: Waisted feminine cut | JN678: Classic fit, lightly waisted, breast pocket | Pleats on rear yoke | Outer fabric (105 g/m²): 65% polyester, 35% cotton

JN 678 S · M · L · XL · XXL · 3XL · 4XL | JN 677 XS · S · M · L · XL · XXL · 3XL



white stone steel light-grey yellow orange light-pink tomato red wine



lime-green irish-green light-blue aqua turquoise royal navy brown carbon black



NEW
NON IRON



Micro-twill with non-iron finish and a rounded hem in four soft colours for a smart business look.



white light-pink
light-blue black

JN 682 MEN'S SHIRT LONGSLEEVE MICRO-TWILL
JN 681 LADIES' SHIRT LONGSLEEVE MICRO-TWILL

Classic shirt made of easy care cotton | Non-iron micro-twill with non-iron finish | Rounded hem | JN681: Waisted, feminine cut | JN682: Classic fit, lightly waisted | Breast pocket | Pleats on rear yoke | Outer fabric (120 g/m²): 100% cotton

JN 682 S · M · L · XL · XXL · 3XL · 4XL | JN 681 XS · S · M · L · XL · XXL · 3XL



NEW
NON IRON

JN 684 MEN'S SHIRT SHORTSLEEVE MICRO-TWILL
JN 683 LADIES' SHIRT SHORTSLEEVE MICRO-TWILL

Classic shirt made of easy care cotton | Non-iron micro-twill with non-iron finish | Rounded hem | JN683: Waisted, feminine cut | JN684: Classic fit, lightly waisted | Breast pocket | Pleats on rear yoke | Outer fabric (120 g/m²): 100% cotton

JN 684 S · M · L · XL · XXL · 3XL · 4XL | JN 683 XS · S · M · L · XL · XXL · 3XL



**OXFORD –
THE CLASSIC
STYLE!**



NEW easy care

JN 688 MEN'S SHIRT SHORTSLEEVE OXFORD
JN 687 LADIES' SHIRT SHORTSLEEVE OXFORD

Classic shirt made of easy care mixed fabrics | Oxford quality with easy care finish | Rounded hem | JN687: Waisted, feminine cut | JN688: Classic fit, lightly waisted | Breast pocket | Pleats on rear yoke | Outer fabric (130 g/m²): 70% cotton, 30% polyester

JN 688 S • M • L • XL • XXL • 3XL • 4XL
JN 687 XS • S • M • L • XL • XXL • 3XL



white silver light-blue black



NEW easy care

JN 686 MEN'S SHIRT LONGSLEEVE OXFORD
JN 685 LADIES' SHIRT LONGSLEEVE OXFORD

Classic shirt made of easy care mixed fabrics | Oxford quality with easy care finish | Rounded hem | JN685: Waisted, feminine cut | JN686: Classic fit, lightly waisted | Breast pocket | Pleats on rear yoke | Outer fabric (130 g/m²): 70% cotton, 30% polyester

JN 686 S • M • L • XL • XXL • 3XL • 4XL
JN 685 XS • S • M • L • XL • XXL • 3XL



white silver light-blue black

HERRINGBONE – FINE PATTERN WITH STYLE HAVE A LOOK!



JN 690 MEN'S SHIRT LONGSLEEVE HERRINGBONE

JN 689 LADIES' SHIRT LONGSLEEVE HERRINGBONE

Classic shirt made of easy care mixed fabrics | Herringbone quality with easy care finish |
Rounded hem | JN689: Waisted, feminine cut | JN690: Classic fit, lightly waisted | Pleats on rear yoke |
Outer fabric (130 g/m²): 84% cotton, 16% polyester

JN 690 S • M • L • XL • XXL • 3XL • 4XL | **JN 689** XS • S • M • L • XL • XXL • 3XL



NEW

easy
care



easy care



black

aubergine

lilac

light-blue

light-grey

white

JN 606 MEN'S BUSINESS SHIRT LONG-SLEEVED

Easy-care, fashionable men's shirt | Twill fabric with easy-care finish | New Kent collar, buttons in matching colour | Yoke at the back and breast pocket | 2 lateral pleats at the back | Comfortable | JN606: Adjustable cuffs | Outer fabric (120 g/m²): 100% cotton

S • M • L • XL • XXL • 3XL

JN 607 MEN'S BUSINESS SHIRT SHORT-SLEEVED

Easy-care, fashionable men's shirt | Twill fabric with easy-care finish | New Kent collar, buttons in matching colour | Yoke at the back and breast pocket | 2 lateral pleats at the back | Comfortable | JN606: Adjustable cuffs | Outer fabric (120 g/m²): 100% cotton

S • M • L • XL • XXL • 3XL



SIX COLOURS TO BE SEEN!

easy care



easy care



easy care



white light-grey light-blue lilac aubergine black



white light-grey light-blue black

JN 609
LADIES' BUSINESS BLOUSE SHORT-SLEEVED

Easy-care, fashionable ladies' blouse | Twill fabric with easy-care finish | Open collar form | Waisted form with rounded hem | Buttons in matching colour | Outer fabric (120 g/m²): 100% cotton

XS • S • M • L • XL • XXL

JN 608
LADIES' BUSINESS BLOUSE LONG-SLEEVED

Easy-care, fashionable ladies' blouse | Twill fabric with easy-care finish | Open collar form | Waisted form with rounded hem | Buttons in matching colour | Outer fabric (120 g/m²): 100% cotton

XS • S • M • L • XL • XXL

JN 615
LADIES' LONG-SLEEVED BLOUSE

Easy-care long-sleeved blouse for business and leisure time | Twill fabric with easy-care finish | Closed collar form | Trendy, longer form | Two-layer yoke on the shoulders | Classic fit – feminine look thanks to dart seams at the breast and back | Rounded hem | Quilted button-placket | 1-button cuff | Outer fabric (120 g/m²): 100% cotton

XS • S • M • L • XL • XXL



easy care
60°
SIZE S-6XL

easy care
60°



easy care
60°
SIZE S-6XL

easy care
60°

JN 644 MEN'S BUSINESS SHIRT SHORTSLEEVE

JN 643 LADIES' BUSINESS SHIRT SHORTSLEEVE

Classic shirt made of durable mixed fabrics | Easy-care poplin with easy-care finish | Rounded hem | Washable at 60° C | JN 643: Waisted, feminine cut | JN 644: Classic fit, lightly waisted, breast pocket, pleats on rear yoke | Outer fabric (105 g/m²): 50% cotton, 50% polyester

JN 644 S · M · L · XL · XXL · 3XL · 4XL · 5XL · 6XL | JN 643 XS · S · M · L · XL · XXL · 3XL



white yellow lime-green steel orange royal



red wine carbon navy black

JN 642 MEN'S BUSINESS SHIRT LONGSLEEVE

JN 641 LADIES' BUSINESS SHIRT LONGSLEEVE

Classic shirt made of durable mixed fabrics | Easy-care poplin with easy-care finish | Rounded hem | Washable at 60° C | JN 641: Waisted, feminine cut | JN 642: Classic fit, lightly waisted, breast pocket, pleats on rear yoke | Outer fabric (105 g/m²): 50% cotton, 50% polyester

JN 642 S · M · L · XL · XXL · 3XL · 4XL · 5XL · 6XL | JN 641 XS · S · M · L · XL · XXL · 3XL



white yellow lime-green steel orange royal



red wine carbon navy black



CASUAL FRIDAY IN STYLE!



NON
IRON



dark-denim

light-denim



dark-denim

light-denim

JN 629 MEN'S DENIM SHIRT

JN 628 LADIES' DENIM BLOUSE

Trendy jeans blouse/shirt „Modern Fit“ | Light denim cotton | Classic rear yoke |
2 breast pockets | Conspicuous backstitch seams | Rounded hem |
Outer fabric: 100% cotton

JN 629 S • M • L • XL • XXL • 3XL

JN 628 XS • S • M • L • XL • XXL

purple/graphite-white

navy/red-white

red/navy-white



graphite/red-white

light-blue/navy-white

green/blue-white

blue/navy-white



easy care



JN 634 MEN'S SHIRT

Shirt in fashionable dot pattern | High-quality poplin with Easy-Care finish, easy to iron | Inside of collar and cuffs in contrasting dot-pattern | Classic fit, lightly waisted, rounded hem | 2 lateral pleats at the back | Cuffs with 2 buttons | Outer fabric: 100% cotton

S • M • L • XL • XXL • 3XL

JN 633 LADIES' BLOUSE

Blouse in fashionable dot pattern | Fine, elastic poplin with Easy-Care finish, easy to iron | Inside of collar and cuffs in contrasting dot-pattern | Lightly waisted, darts at the front and back | Cuffs with 2 buttons | Rounded hem | Outer fabric: 95% cotton, 5% elasthane

XS • S • M • L • XL • XXL

easy care



easy care



easy care



JN 191 MEN'S SHIRT CLASSIC FIT LONG

JN 192 MEN'S SHIRT CLASSIC FIT SHORT

JN 614 LADIES' LONG-SLEEVED BLOUSE

Fashionable ladies' blouse and men's shirt for business and city | High-quality poplin fabric with easy-care finish | Soft and skin-friendly, very easy to iron | JN191, JN192: Slightly waisted, comfortable form, Italian button placket, breast pocket | JN191: Adjustable cuffs | JN614: Classic fit - feminine look thanks to dart seams at the front and back, trendy longer form, rounded hem, closed collar form, two-layer yoke on the shoulders, quilted button-placket, longer cuff | Outer fabric (105 g/m²): 100% cotton

JN 191 S · M · L · XL · XXL · 3XL | **JN 192** S · M · L · XL · XXL · 3XL | **JN 614** XS · S · M · L · XL · XXL

* only JN 191 / JN 192 available



white

light-blue

cool-grey

wine

navy

brown

black



white

brown

black

JN 193 MEN'S SHIRT SLIM FIT LONG

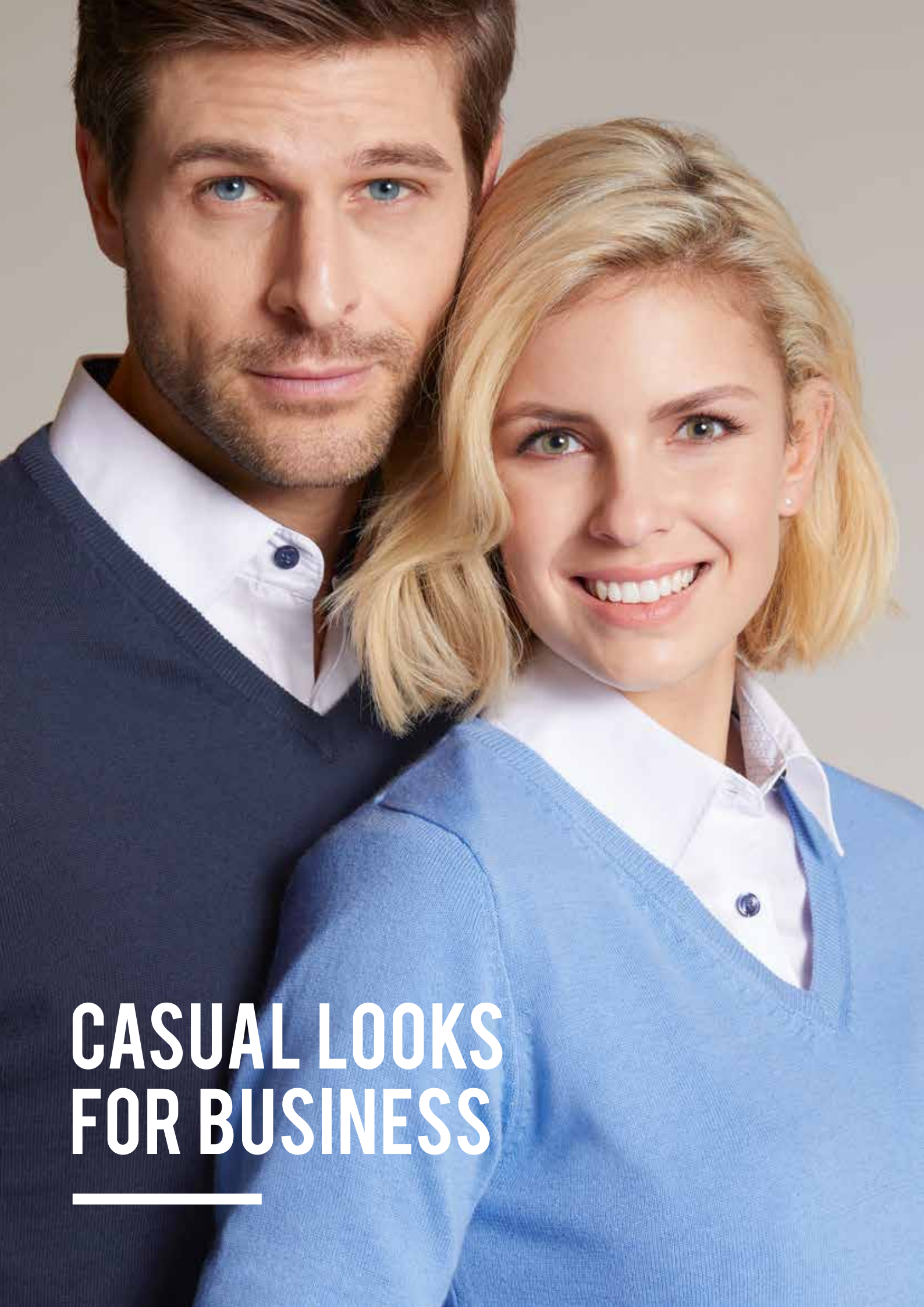
JN 645 LADIES' SHIRT SLIM FIT

Fashionably waisted city shirt and ladies' blouse | Fine, elastic and skin-friendly poplin fabric with easy-care finish | Small and soft collar | JN193: Waisted form, French button placket, adjustable cuffs | JN645: Waisted form with darts at the front and back | Outer fabric (95 g/m²): 67% cotton, 30% polyamide, 3% elasthan

JN 193 S · M · L · XL · XXL · 3XL

JN 645 XS · S · M · L · XL · XXL





**CASUAL LOOKS
FOR BUSINESS**



JN 659 MEN'S V-NECK PULLOVER

JN 658 LADIES' V-NECK PULLOVER

Classic cotton pullover | Light knitted fabric | V neck | Machine washable | JN658: waisted form | Outer fabric (260 g/m²): 100% cotton

JN 659 S · M · L · XL · XXL · 3XL | JN 658 XS · S · M · L · XL · XXL



camel green grey-heather dark-orange red bordeaux



glacier-blue royal forest-green navy anthracite-melange black



JN 657 MEN'S V-NECK PULLUNDER

JN 656 LADIES' V-NECK PULLUNDER

Classic cotton sleeveless pullover | Light knitted fabric | V-neck | Machine washable | JN656: waisted form | Outer fabric: 100% cotton

JN 657 S · M · L · XL · XXL · 3XL | **JN 656** XS · S · M · L · XL · XXL



camel green grey-heather dark-orange red bordeaux



glacier-blue royal forest-green navy anthracite-melange black



100% COTTON



100% COTTON

JN 661 MEN'S V-NECK CARDIGAN

JN 660 LADIES' V-NECK CARDIGAN

Classic cotton cardigan | Light knitted fabric | V-neck | Machine washable | JN660: waisted form | Outer fabric (260 g/m²): 100% cotton

JN 661 S · M · L · XL · XXL · 3XL | **JN 660** XS · S · M · L · XL · XXL



camel green grey-heather dark-orange red bordeaux



glacier-blue royal forest-green navy anthracite/melange black



JN 668 MEN'S CARDIGAN

JN 667 LADIES' CARDIGAN

High-quality cardigan with silk/cashmere content | Classic design in fine, light knitting quality | V-neck | Machine washable | JN667: waisted form | Outer fabric (190 g/m²): 70% cotton, 25% silk, 5% cashmere

JN 668 S · M · L · XL · XXL · 3XL | JN 667 XS · S · M · L · XL · XXL



light-grey-melange

anthracite-melange

denim-melange

navy-melange



JN 664 MEN'S PULLOVER

JN 663 LADIES' PULLOVER

High-quality pullover with silk/cashmere content | Classic design in fine, light knitting quality | V-neck | Machine washable | JN663: waisted form | Outer fabric (190 g/m²): 70% cotton, 25% silk, 5% cashmere

JN 664 S · M · L · XL · XXL · 3XL

JN 663 XS · S · M · L · XL · XXL



light-grey-melange

denim-melange



anthracite-melange

navy-melange



The Travel Coat with practical and fashionable details is always a good choice for business and travelling.



JN1142

MB7301

JN648

JN664

JN 1142 MEN'S TRAVEL COAT

Casual short coat for business, travel and leisure | Easy care, crease-resistant, water-repellent fabric | 2 side pockets, zipped inner pocket | Slit at the back for optimum freedom of movement | JN1141: feminine cut | Outer fabric: 100% polyester | Lining: 100% polyester

JN 1141 LADIES' TRAVEL COAT

JN 1142 S · M · L · XL · XXL · 3XL | JN 1141 S · M · L · XL · XXL



sand



navy



black



light-red



nautic-blue



navy



black



navy



black

JN 1124 MEN'S HYBRID SWEAT JACKET

JN 1123 LADIES' HYBRID SWEAT JACKET

Trendy sweat jacket in attractive material mix | Back and sleeves made of high-quality | French-Terry fabric | Inside not roughened | Front lightly padded and quilted | 2 zipped side pockets, 2 inner pockets | JN1123: waisted | Outer fabric (280 g/m²): 80% cotton, 20% polyester | Outer fabric 2: 100% polyamide | Padding: 100% polyester

JN 1124 S · M · L · XL · XXL · 3XL | JN 1123 S · M · L · XL · XXL

JN 1094 MEN'S BIKER JACKET

JN 1093 LADIES' BIKER JACKET

Fashionable jacket in biker style | Easy-care, water-repellent fabric | Zip with storm flap and piping | 2 breast pockets with press studs | 2 zipped side pockets with piping | Zipped inside pocket | Inner lining in jeans-look | Zip for decoration at the back | JN1093: waisted form | Outer fabric: 100% polyamide | Lining: 65% polyester, 35% cotton | Lining (Sleeves): 100% polyester

JN 1094 S · M · L · XL · XXL · 3XL | JN 1093 S · M · L · XL · XXL



silver/black olive/silver indian-red/silver navy/silver black/silver

JN 1112 MEN'S LIGHTWEIGHT JACKET

JN 1111 LADIES' LIGHTWEIGHT JACKET

Padded jacket with fashionable details | Wind- and water-repellent fabric in material mix | Concealed two-way-front zip with chin protection | 2 zipped side pockets | Mesh pocket inside | Zips in contrasting colour | Stand-up collar | Elastic sleeve-bands and waistband | JN1111: Lightly waisted | Outer fabric: 100% polyamide | Lining: 100% polyamide | Padding: 100% polyester

JN 1112 S · M · L · XL · XXL · 3XL | JN 1111 S · M · L · XL · XXL



sand navy black

JN 1096 MEN'S TRAVEL JACKET

JN 1095 LADIES' TRAVEL JACKET

Trendy, light jacket for leisure and travel | Easy-care, water-repellent fabric | Inside of collar, cuffs and waistband with jeans trimming | 2 breast pockets and 2 side pockets with press studs | No inner lining | JN1095: waisted form | Outer fabric: 100% polyamide | Trimming: 65% polyester, 35% cotton

JN 1096 S · M · L · XL · XXL · 3XL | JN 1095 S · M · L · XL · XXL



cobalt navy black

JN 1056 MEN'S URBAN STYLE JACKET

Stylish jacket for business and leisure | Easy-care, water repellent fabric | Collar inside made of soft cord | Covered zip with storm flap and press studs | 4 front pockets and 1 sleeve pocket with press studs | Zipped inner pocket, mobile phone pocket | Inner lining with colour black = black, with colour navy = red, with colour cobalt = navy | Zip for decoration at the back | JN1055: waisted form with belt | JN1056: adjustable at the waist | Outer fabric: 100% polyester | Lining: 100% polyester

JN 1056 S · M · L · XL · XXL · 3XL | JN 1055 S · M · L · XL · XXL

JN 1055 LADIES' URBAN STYLE JACKET



dark-olive navy black

JN 1072 MEN'S DIAMOND QUILTED JACKET

Fashionable quilted jacket for business and leisure | Easy-care, water-repellent fabric | Inside of collar and storm flap made of soft corduroy | Concealed 2-way zip with storm flap and press studs | Breast pockets with press studs | Small inner pocket | Inner lining in contrasting colour | JN1071: waisted | Outer fabric: 100% polyamide | Lining: 100% polyamide | Trimming: 80% polyester, 20% polyamide | Padding: 100% polyester

JN 1072 S · M · L · XL · XXL · 3XL | JN 1071 S · M · L · XL · XXL

JN 1071 LADIES' DIAMOND QUILTED JACKET



DuPont Sorona



JN 1106 MEN'S LIGHTWEIGHT DOWN JACKET **JN 1105 LADIES' LIGHTWEIGHT DOWN JACKET**

Light down jacket with fashionable details | Soft, wind- and water-repellent fabric | Full-length button placket with press-studs | Stand-up collar | 2 zipped side pockets | 2 breast pockets with press-studs | Zipped inner pocket | JN1105: waisted | Fabric for colours black* and Indian-red*: Outer fabric: 100% polyamide, padding: 90% downs, 10% feathers, padding 2: 100% polyester | Fabric for melange colours: Outer fabric: 69% polyamide, 31% polyester, padding: 90% downs, 10% feathers, padding 2: 100% polyester

JN 1106 S · M · L · XL · XXL · 3XL | JN 1105 S · M · L · XL · XXL

JN 1100 MEN'S WINTER JACKET **JN 1099 LADIES' WINTER JACKET**

Padded winter jacket with fashionable details | Padded jacket with wool felt trimming | Wind- and water-repellent fabric | Stand-up collar with integrated hood | Knitted cuffs on sleeves and collar | 2-way zip with storm flap | Zipped side- and inner pockets | Zip at the back for decoration | JN1099: lightly waisted | JN1100: breast pocket with 2 studs | Outer fabric: 100% polyamide | Lining: 100% polyester | Padding: 100% polyester

JN 1100 S · M · L · XL · XXL · 3XL | JN 1099 S · M · L · XL · XXL



SUCCESS IS A
JOURNEY, NOT
A DESTINATION



JN 1088 MEN'S SOFTSHELL JACKET

JN 1087 LADIES' SOFTSHELL JACKET

Classic softshell jacket in melange look | 3-layer functional material with TPU-membrane | Windproof, breathable and waterproof (5,000 mm water column) | Non-taped seams | Inside made of micro fleece with waffle structure | 2 zipped side pockets | JN1087: lightly waisted | Outer fabric (360 g/m²): 96% polyester, 4% elasthane

JN 1088 S · M · L · XL · XXL · 3XL | JN 1087 S · M · L · XL · XXL



light-melange



dark-melange

INDEX

JN 191	Men's Shirt Classic Fit Long	42	JN 669	Ladies' Shirt „Diamonds“	18
JN 192	Men's Shirt Classic Fit Short	42	JN 670	Men's Shirt „Diamonds“	18
JN 193	Men's Shirt Slim Fit Long	44	JN 671	Ladies' Shirt „Wings“	18
JN 606	Men's Business Shirt Long-Sleeved	32	JN 672	Men's Shirt „Wings“	18
JN 607	Men's Business Shirt Short-Sleeved	32	JN 673	Ladies' Shirt „Dots“	18
JN 608	Ladies' Business Blouse Long-Sleeved	34	JN 674	Men's Shirt „Dots“	18
JN 609	Ladies' Business Blouse Short-Sleeved	34	JN 677	Ladies' Shirt Longsleeve Poplin	NEW 25
JN 614	Ladies' Long-Sleeved Blouse	42	JN 678	Men's Shirt Longsleeve Poplin	NEW 25
JN 615	Ladies' Long-Sleeved Blouse	35	JN 679	Ladies' Shirt Shortsleeve Poplin	NEW 24
JN 616	Ladies' Checked Blouse	23	JN 680	Men's Shirt Shortsleeve Poplin	NEW 24
JN 617	Men's Checked Shirt	23	JN 681	Ladies' Shirt Longsleeve Micro-Twill	NEW 26
JN 618	Ladies' Plain Shirt	21	JN 682	Men's Shirt Longsleeve Micro-Twill	NEW 26
JN 619	Men's Plain Shirt	21	JN 683	Ladies' Shirt Shortsleeve Micro-Twill	NEW 27
JN 620	Men's Shirt „HAI“	6	JN 684	Men's Shirt Shortsleeve Micro-Twill	NEW 27
JN 621	Men's Shirt „BUTTON DOWN“	8	JN 685	Ladies' Shirt Longsleeve Oxford	NEW 29
JN 622	Men's Shirt „NEW KENT“	12	JN 686	Men's Shirt Longsleeve Oxford	NEW 29
JN 623	Men's Shirt „KENT“	13	JN 687	Ladies' Shirt Shortsleeve Oxford	NEW 29
JN 624	Men's Shirt „KENT“, for Cufflinks	11	JN 688	Men's Shirt Shortsleeve Oxford	NEW 29
JN 625	Men's Shirt „BUTTON DOWN“	9	JN 689	Ladies' Shirt Longsleeve Herringbone	NEW 30
JN 626	Ladies' Blouse	14	JN 690	Men's Shirt Longsleeve Herringbone	NEW 30
JN 628	Ladies' Denim Blouse	39	JN 1055	Ladies' Urban Style Jacket	58
JN 629	Men's Denim Shirt	39	JN 1056	Men's Urban Style Jacket	58
JN 633	Ladies' Shirt	41	JN 1071	Ladies' Diamond Quilted Jacket	59
JN 634	Men's Shirt	41	JN 1072	Men's Diamond Quilted Jacket	59
JN 641	Ladies' Business Shirt Longsleeve	37	JN 1087	Ladies' Softshell Jacket	63
JN 642	Men's Business Shirt Longsleeve	37	JN 1088	Men's Softshell Jacket	63
JN 643	Ladies' Business Shirt Shortsleeve	36	JN 1093	Ladies' Biker Jacket	55
JN 644	Men's Business Shirt Shortsleeve	36	JN 1094	Men's Biker Jacket	55
JN 645	Ladies' Shirt Slim Fit	44	JN 1095	Ladies' Travel Jacket	57
JN 647	Ladies' Shirt „Plain“	17	JN 1096	Men's Travel Jacket	57
JN 648	Men's Shirt „Plain“	17	JN 1099	Ladies' Winter Jacket	61
JN 656	Ladies' V-Neck Pullunder	48	JN 1100	Men's Winter Jacket	61
JN 657	Men's V-Neck Pullunder	48	JN 1105	Ladies' Lightweight Down Jacket	60
JN 658	Ladies' V-Neck Pullover	47	JN 1106	Men's Lightweight Down Jacket	60
JN 659	Men's V-Neck Pullover	47	JN 1111	Ladies' Lightweight Jacket	56
JN 660	Ladies' V-Neck Cardigan	49	JN 1112	Men's Lightweight Jacket	56
JN 661	Men's V-Neck Cardigan	49	JN 1123	Ladies' Hybrid Sweat Jacket	54
JN 663	Ladies' Pullover	51	JN 1124	Men's Hybrid Sweat Jacket	54
JN 664	Men's Pullover	51	JN 1141	Ladies' Travel Coat	52
JN 667	Ladies' Cardigan	50	JN 1142	Men's Travel Coat	52
JN 668	Men's Cardigan	50			

SIZES

MEN'S

Standard Size

	XS	S	M	L	XL	XXL	3XL	4XL	5XL	6XL
	44	46	48	50	52	54	56	58	60	62
Collar size	36/38	39/40	41/42	43/44	45/46	47/48	49/50	51/52		

LADIES'

Size

	XS	S	M	L	XL	XXL	3XL	4XL
	34	36/38	38/40	40/42	42/44	46	48	50

CUTS FOR LADIES AND MEN



**CLASSIC FIT
COMFORT FIT**



MODERN FIT



SLIM FIT

